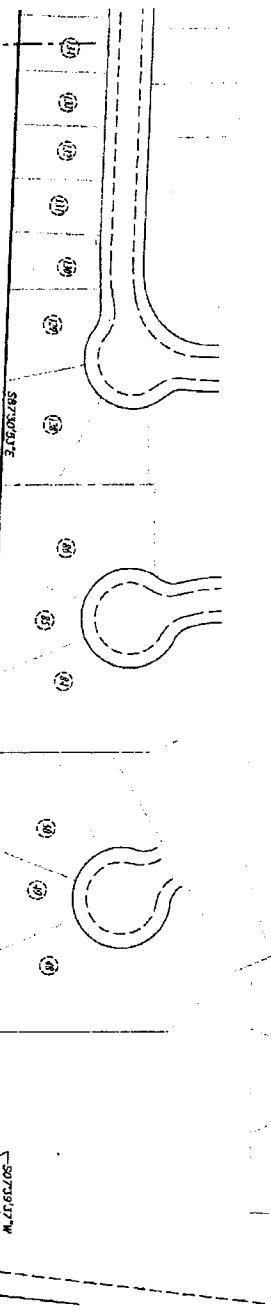
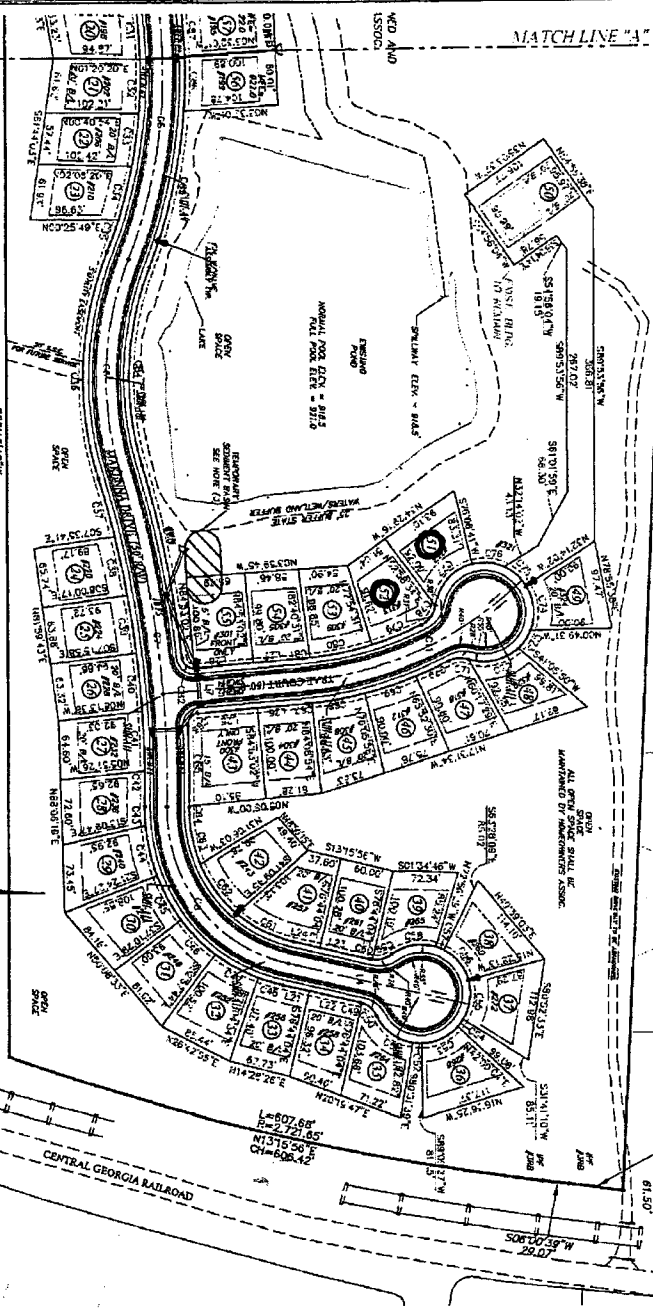


MATCH LINE "A"

MATCH LINE "A"

NOTE: DUE TO TOPOGRAPHIC RESTRICTIONS, LOT 50 WAS REQUIRED TO BE A FLAG LOT.



Approved by records:
 Director, Henry County Development from records Date 7/29/05
 every county board of commissioners

THOMAS COOPER, GENERAL
 CLERK OF THE BOARD OF COMMISSIONERS
 HENRY COUNTY BOARD OF COMMISSIONERS

OWNER/DEVELOPER
 BRENT SCARBOROUGH
 155 ROBINSON DRIVE
 FAYETTEVILLE, GEORGIA 30214
 24-HOUR CONTACT
 GREG NEY
 PHONE: (770) 231-4482

18 43 PG 43

RECORDS OFFICE
 SUPERVISOR ONLY
 OCT 08 2005 10:30 AM
 CLERK OF SUPERVISOR ONLY



LANDMARK
 SURVEYING & PLANNING, INC.

218 WOLFE DRIVE
 STOCKBRIDGE, GA 30281
 Phone: (770) 307-3387
 Fax: (770) 307-3388

• land surveying
 • land planning
 • land development design
 • construction layout

Final Plat For:
STEELE FOREST
 Land Lot 198 & 199 Of The 6th District
 Henry County, Georgia

PROJECT NO.
 003022
 REMSONS

1ST PLOT FILE NO.
 003022
 REMSONS

DATE
 May 11, 2005

SHEET NUMBER
 3