

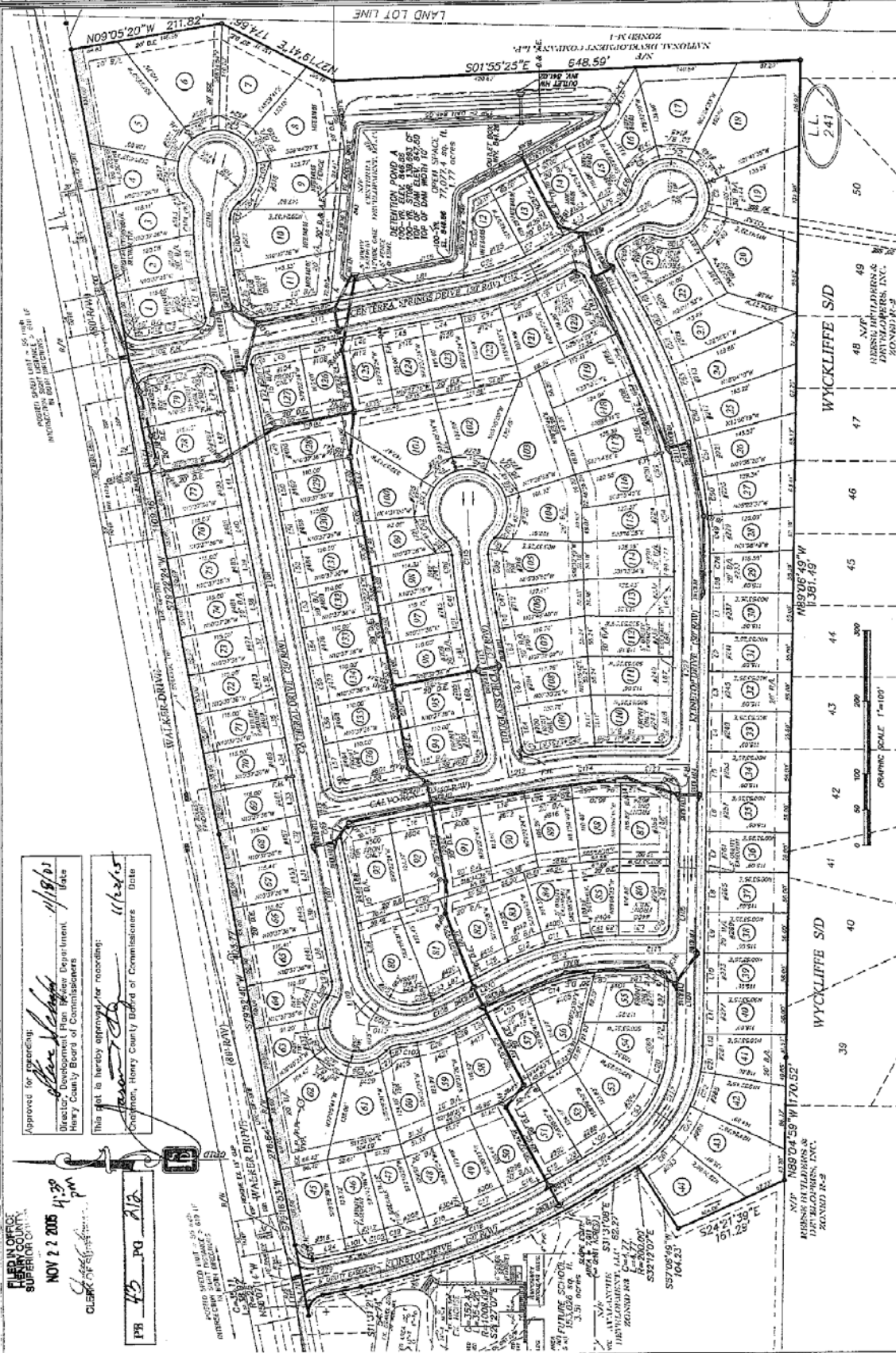
ASP POINT FILE NO: D03047
 REVISIONS: D03047
 PROJECT NO: D03047
 DATE: 11/18/02

The Villages At Centerra Ridge

Final Plat For
 Land Lot 241 of the 2nd District
 Henry County, Georgia

LANDMARK SURVEYING & PLANNING, INC.
 218 Moss Drive
 Stone Mountain, GA 30087
 Phone: (770) 587-3389
 Fax: (770) 587-3389
 Land surveying
 Land development design
 Construction layout

DATE: September 27
 SHEET NUMBER: 2 OF 2



OWNER/DEVELOPER
 Centerra Development, L.L.C.
 114 Eagle Springs Drive, Suite C
 Stockbridge, Ga. 30281

24-HOUR CONTACT
 DREW CAMP
 PHONE: (878) 414-0811

Line	Upstream Node	Downstream Node	Section Size	Section Material	Section Length (ft)	Constructed Slope (%)
C	P-118 SB B7	HW B8	30 inch	CMP	13	1.37
	P-128 DMCB B5.1	DMCB B5	18 inch	BOCCMP	27	1.74
	P-138 SB C1	SB C2	18 inch	BOCCMP	146	3.23
	P-148 SB C2	SB C3	18 inch	BOCCMP	63	0.50
	P-158 SB C3	SB C4	18 inch	BOCCMP	27	0.49
D	P-168 SB C4	SB C5	18 inch	BOCCMP	66	1.82
	P-178 SB C5	HW D4	24 inch	BOCCMP	110	1.15
	P-188 DMCB D4	HW D4	24 inch	CMP	53	3.23
	P-198 DMCB D4.1	SWCB D3.1	18 inch	BOCCMP	27	2.67
	P-208 DMCB D4.1	SWCB D3.1	18 inch	BOCCMP	36	2.17
	P-218 DMCB D4.1	DMCB D4	18 inch	BOCCMP	27	1.04

Line	Upstream Node	Downstream Node	Section Size	Section Material	Section Length (ft)	Constructed Slope (%)
B	P-23A SB A8.1	DMCB A8	24 inch	BOCCMP	122	0.98
	P-24A SWCB A12.3	SWCB A12.2	18 inch	BOCCMP	37	2.22
	P-25A SB A12.2	SB A12.1	18 inch	BOCCMP	34	1.18
	P-26A SB A12.1	DMCB A12	18 inch	BOCCMP	117	0.68
	P-27A SWCB A12.6	SWCB A12.5	18 inch	BOCCMP	27	0.52
	P-28A SB A12.5	SB A12.4	18 inch	BOCCMP	27	1.10
	P-29A SB A12.4	DMCB A12	18 inch	BOCCMP	27	1.41
	P-30A DMCB A15.2	DMCB A15.1	24 inch	BOCCMP	27	1.41
	P-31A HW A15.1	HW A15	24 inch	CMP	119	2.53
	P-32A HW A12.3	HW A12.2	48 inch	CMP	62	0.89
	P-33A SB A17.2	HW A17.1	48 inch	BOCCMP	65	0.90
	P-34A SB A17.1	HW A17	48 inch	CMP	71	1.44
	P-35A SB B	SB B	24 inch	BOCCMP	108	1.80
	P-36A SWCB B3	SWCB B4	24 inch	BOCCMP	22	2.26
	P-37B SWCB B4	SWCB B5	24 inch	BOCCMP	256	1.88
	P-38B SWCB B5	DMCB B6	30 inch	BOCCMP	63	1.45
	P-39B DMCB B6	DMCB B6	30 inch	BOCCMP	63	1.45
	P-40B DMCB B6	SB B7	30 inch	BOCCMP	33	1.52

APPROVED FOR RECORDING:
 [Signature]
 Clerk of Superior Court
 Henry County Board of Commissioners
 Date: 11/18/02

This plat is hereby approved for recording:
 [Signature]
 Chairman, Henry County Board of Commissioners
 Date: 11/22/02

FILED IN OFFICE
 HENRY COUNTY
 SUPERIOR COURT
 NOV 22 2005
 4:30 PM
 CLERK OF SUPERIOR COURT

PB 43 PO A12